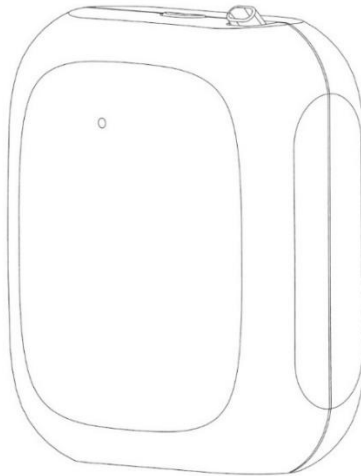




ScentAir Splash™

User Manual



Rev 10.21
316000115

SAFETY TIPS AND PRECAUTIONS

Please follow these important guidelines to prevent product damage or injury.

ALWAYS

- Use both hands while handling the device.
- Use the provided wall mount when operational.
- Keep the device upright when cartridge oil is inserted.
- Keep out of reach of small children and pets.

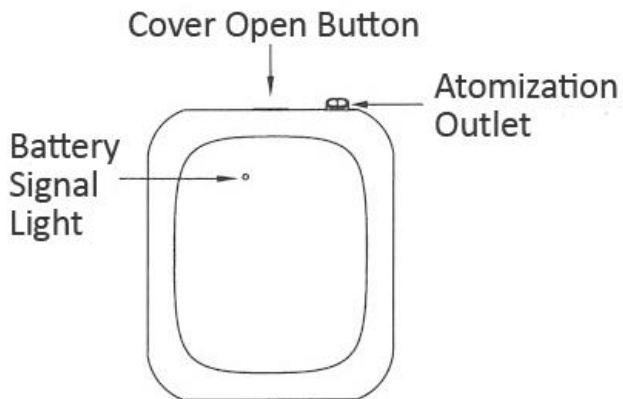
NEVER

- Take the device apart or attempt to repair the device yourself. If your device needs service, please contact ScentAir.
- Move or change your fragrance cartridge while device is in operation.
- Cover the device with an object or material while the device is in use.
- Use outdoors or expose to moisture.

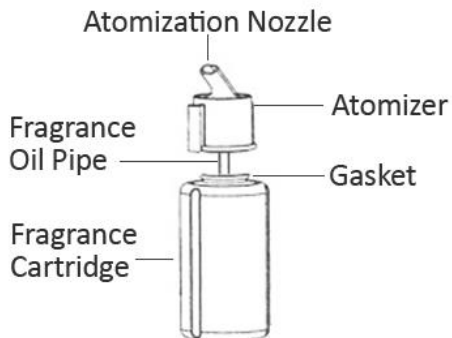
Fragrance Cartridge Handling

- Use only as directed.
- Do not ingest.
- Store in a cool place.
- Avoid contact with eyes or skin. If skin contact occurs, rinse well with soap and water. If eye contact occurs, rinse well with water. If irritation persists, seek medical attention.
- Keep out of the reach of children and pets.

DEVICE OVERVIEW

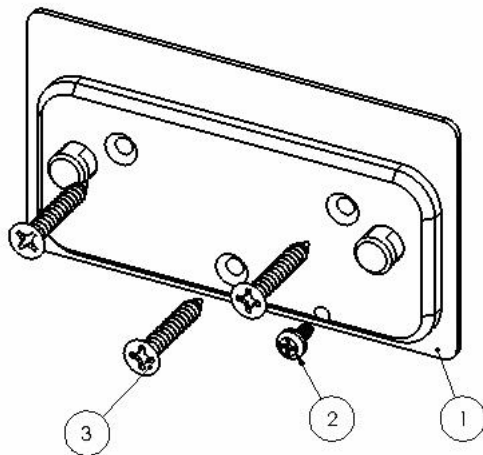


FRAGRANCE CARTRIDGE OVERVIEW



WALL MOUNTING INSTRUCTIONS

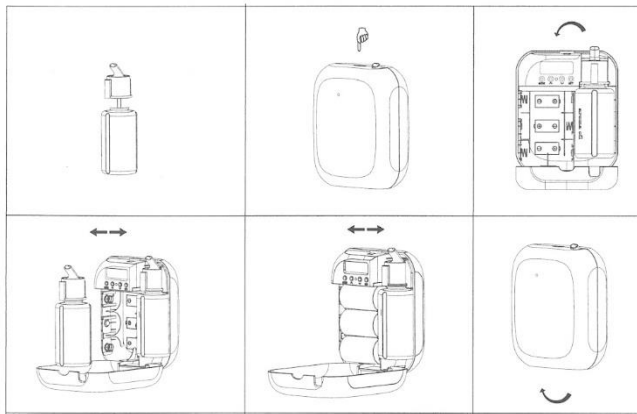
ITEM NO.	DESCRIPTION	QTY.
1	SPLASH WALL MOUNT	1
2	SPLASH SECURITY SCREW	1
3	WALL MOUNT SCREW	3



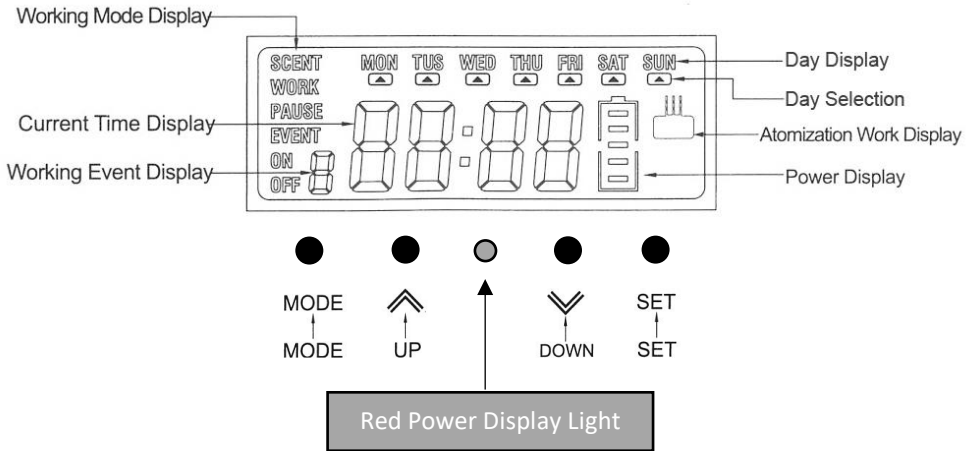
CARTRIDGE CHANGE INSTRUCTIONS

- 1) Open Splash by pressing the top button to release front cover
- 2) Remove batteries so that the unit is not running during cartridge replacement
- 3) Remove fragrance bottle
- 4) Unscrew top atomizer from the fragrance bottle
- 5) Screw top atomizer to the new fragrance bottle
- 6) Replace fragrance bottle in the splash unit
- 7) Insert batteries back into the unit
- 8) Close Splash unit

Changing Your Atomizer Quarterly: Each quarter you will receive a NEW atomizer with your fragrance delivery. Simply discard and replace your prior atomizer with the new one provided. This quarterly changeout will ensure top performance from your ScentAir Splash.



DISPLAY OVERVIEW



DEFINITIONS

- **Event** – The event settings capture the scent run times
- **Scent Work** – This is the amount of time the unit atomizes fragrance.
 - Scent Work time ranges from 3-10 seconds with the ability to change the work time in 1 second intervals
- **Scent Pause** – This is the amount of time the unit pauses between atomizing fragrance
 - Scent Pause time ranges from 120 seconds (2 minutes) - 900 seconds (15 minutes)

DEFAULT AND RECOMMEND SETTINGS

- 1) When delivered by ScentAir, the pre-programmed Event 1 default schedule is as follows:
 - **Time Zone:** Time is set to Eastern Standard Time
 - **Run Time:** 24 hours per day schedule, 7 days a week
 - **Scent Intensity:** Medium: 7 seconds on, every 10 minutes
- 2) To ensure you do not exceed 300 hours of monthly fragrance, the following are recommended High, Medium, Low, and Very Low intensity settings.

If running a 24-hour schedule:

- High: 10 seconds on, every 13 minutes
- Medium: 7 seconds on, every 10 minutes
- Low: 3 seconds on, every 6 minutes
- Very Low: 3 seconds on, every 9 minutes

If running a 12 to 16-hour schedule:

- High: 10 seconds on, every 11 minutes
- Medium: 7 seconds on, every 7 minutes
- Low: 4 seconds on, every 5 minutes
- Very Low: 3 seconds on, every 8 minutes

HOW TO OPERATE & CHANGE SETTINGS

1) Power On / Off

- Place 3 D-Alkaline batteries
- When the red-light flashes the device has turned on (this will happen quickly after battery is installed)
- **Note:** 3 D-Alkaline batteries will last up to 90-days with settings up to 300 hours of fragrance time per month
- To power off remove batteries

2) Using your system controls

- Use the **Λ V** to change settings. Arrow **Λ** increases or advances the setting and arrow **V** decreases or reduces the setting
- Press the **SET** button to advance to the next setting as you confirm each individual setting

3) Setting Local Time

- Press **SET** for 5 seconds to activate the time setting interface
- Press **Λ V** to set the hour, press **SET** to confirm and then move to minute setting
- Press **Λ V** to set minutes, press **SET** confirm and then move to week setting
- Press **Λ V** to select the current day, press **SET** to confirm
- Once your time/date is set, the device will save your settings
- **Note:** System time operates beginning at 00:00 (12:00am) running through 23:59 (11:59pm)

4) Power Display Light

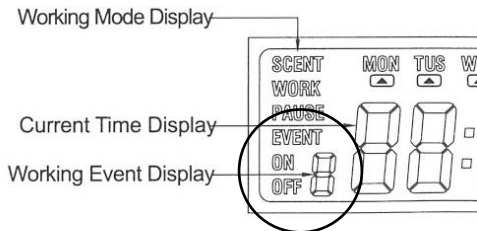
- When the batter power is getting low, a red light on the front of your ScentAir Splash will flash as a low power warning
- When the red light remains on, the device will stop working until the batteries are replaced

5) Event Settings

- You have 4 scent events that can be customized
- Each scent event has 4 customizable *settings*
- Each event operates independently and controls the scent concentration independently

Important Note:

- System time operates beginning at 00:00 (12:00 am) running through 23:59 (11:59pm).
- Each event can run/control within a 24-hour time period only
 - **For example:** If the working time start is 22:00 (10 pm) with an end at 02:00 (2 am), you will need to set 2 separate day events because that crosses over the 24-hour time period. For this example, you would need to set one event for 22:00-23:59 and a second even for 00:00-02:00
- Your display will go blank after 10 seconds, to return to set up press **MODE** at any time
- Always look in the bottom right corner of your display to see what event setting you are working within before you begin to make changes



6) Event 1 – How to Schedule your first scent event

Setting 1: “Event On 1” – How to set your scenting start time

- Press **MODE** to begin, on the left side of the screen you will see “**Event On 1**” on the bottom left side of the display (if your starting screen is blank, press **MODE** twice to get to “Event On 1”)
- To enter the event start time setting, press the **SET** button until the hour setting flashes
- Press **Λ V** to set hour, press **SET** to confirm and start minute setting
- Press **Λ V** to set minute, press **SET** to confirm and start weekday setting
- Press **Λ V** to set the day(s) of the week you want your scent to run
 - Press the **Λ** button and then the arrow below the day of the week will blink, this means that day is selected as a day you want scent
 - Each time you press the **Λ** button it will advance to the next day



- If you do not want to scent on a particular day press the **V** button to remove that day, you will see the arrow below the day disappear and then you advance to the next day of the week



- If you want to change the days of the week the **Λ V** buttons will cycle through
- Once you have finalized the days for scenting press **MODE** to move to setting your end time

Setting 2: “Event Off 1” – How to set your scenting end time

- Once the start time is set you will automatically advance to the end time settings, you will see “Event Off 1” on the bottom left side of the display
- Press **SET** to activate the hour setting
- Press **Λ V** to set hour, press **SET** to confirm and start minute setting
- Press **Λ V** to set minute, press **SET** to confirm and the working end time setting is finished
- Press **MODE** to finalize the end time settings and move to the Scent Work setting

Setting 3: “Scent Work” – How to set the amount of time you want to atomize fragrance

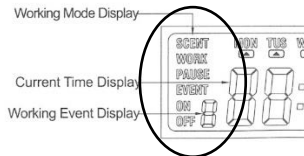
- Scent Work is the amount of time that your Splash unit deploys fragrance
- You will see the words Scent Work in the top left side of the display
- Press **A** or **V** to set the scent work time
 - The scent time is from 3-10 seconds with 1 second intervals
 - Example: “10” = 10 seconds of fragrance output
 - Press **MODE** to finalize the scent work time and move to your Scent Pause time

Setting 4: “Scent Pause” – How to set the amount of your unit pauses scenting

- Scent Pause is the amount of time that your Splash unit pauses between scent work times
- You will see the words Scent Pause in the top left side of the display
- Scent Pause time ranges from 120 seconds (2 minutes) - 900 seconds (15 minutes)
- Press **A V** to set the pause time
 - From 120-300 seconds the interval is 20 seconds
 - From 300-500 seconds the interval is 50 seconds
 - From 500-900 seconds interval is 100 seconds
- After you select the pause time you have completed Event 1 scheduling
- Press **MODE** to advance to Event 2 settings

Important Note:

- If at any time you exit out of the event settings (screen will look blank) you can press **MODE** to get back into settings
- Press **MODE** each time you want to advance to the next setting
- During any setting if you press **SET** you can begin customization of that setting
- Always look for the setting information on the left side of the display



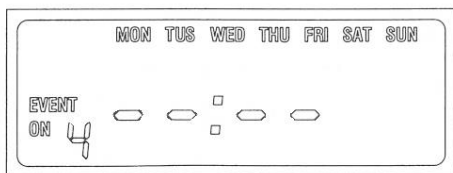
7) Events 2, 3 and 4

- After Event 1 you will automatically advance to Event 2
- If you do not want to set additional events no additional set up is needed
- All instructions for Events 2, 3 and 4 are the same as Event 1 except if you exit out of set up then you have to press **MODE** additional times to get back to the specific event settings

QUICK-HELP

What does an event look like if its off:

- If an event is off the screen will look like whats shown below
- If you want to program the event press the **SET** button to begin set up



Scent Work and Pause Quick Change:

- While in a current scent event if you press **Λ V** then you can adjust the scent work time
- Press **Λ** to increase scent work time or press **V** to reduce the scent work time
- After setting the scent work time, press **MODE** to enter Scent Pause setting
- Press **Λ** to increase the scent pause time or press **V** to reduce the scent work time
- When you are done the device saves the setting automatically

Restore Factory Setting:

- Long press **MODE** for 10 seconds to restore to factory setting
- This will set the working events to 8:00-22:00 with a scent concentration of 5:120

The device does not come on:

- Check if the batteries reverse the positive and negative poles
- Check if the batteries need to be replaced
- Check the setting of device scent time

No/Weak fragrance atomization:

- If the pump is running, then the fragrance nozzle may be clogged
- Check if the oil pipe within your fragrance cartridge has fallen off
- Check if the nozzle blocked
- Check if the connection of atomizer or nozzle are loose

Fragrance oil dripping:

- Check if the atomizer is broken
- Check if the gasket broken and need change
- Check if the connection of oil bottle and atomizer are tightly fastened

For additional support contact ScentAir Technical Services

SCENTAIR CONTACT INFORMATION

US & Canada

customercare@scentair.com

866.723.6824

ScentAir.com

ScentAir Netherlands

infoNL@scentair.com

+31 102 236 264

ScentAir.nl

Germany

infoDE@scentair.com

+49 30 5444 9120

ScentAir.de

France / Spain / Switzerland

customercareEMEA@scentair.com

+33 5 62 57 63 20

ScentAir.fr

ScentAir.es

ScentAir.ch

UK

customerserviceuk@scentair.com

+01 628 601650

ScentAir.com/en-gb

Hong Kong

customercareapac@scentair.com

+852 3563 5566

ScentAir.hk

Australia

customercareapac@scentair.com

+61 0 3 9042 9494

ScentAir.com/en-au

Japan

customercareapac@scentair.com

+81 3 6550 8759

ScentAir.jp

China

customercareapac@scentair.com

+86 21 3363 3570

ScentAir.com/zh-cn

ABOUT SCENTAIR

ScentAir Technologies, LLC., privately held and founded in 1994, provides best-in-class ambient scent marketing solutions to many of the world's most recognized brands. As the global leader in olfactory marketing, the Company creates memorable impressions for both small businesses and global enterprises, elevating their customer experience through the power of scent. Based in Charlotte, NC, USA, and corporate offices in the United Kingdom, France, Netherlands, China, Hong Kong, and Australia. The Company's 425+ global team members service customers in 119 countries through its dedicated global supply chain and manufacturing operations in North America, Europe, and Asia. ScentAir is committed to the creation of customized scent strategies that boost clients' brand sentiments, customer loyalty, and sales.

To learn more, go to **ScentAir.com**

scentair®

ScentAir Splash™

© ScentAir